



Carla Martin 407-739-9378



THE CAYMAN at LAUREATE PARK

THE FARMHOUSE

4 Bedrooms • 3 Bathrooms • 2-Car Garage • 2,599 ft² Living Area • 3,333 ft² Under Roof

The Cayman is a 2,547 sq. ft. home featuring 4 bedrooms, 3 baths, and a two-car garage. The open-concept main level includes a spacious kitchen with a large island, flowing into the dining room, living room, and a covered lanai for outdoor enjoyment. The main-floor bedroom offers privacy for guests, while upstairs, the master suite provides a luxurious retreat with a walk-in closet and spa-inspired bath. Two additional bedrooms, a shared bath, and a laundry room complete the second floor. With ICI Homes' customization options, the Cayman adapts beautifully to your lifestyle.

Carla Martin 407-739-9378

ICI Select Realty Inc. - 100

camartin@icihomes.com

* Renderings may vary from actual home. Please see disclaimer for more details.

THE CAYMAN

4 Bedrooms • 3 Bathrooms • 2-Car Garage

Laureate Park
Orlando, FL

Available In
Laureate Park 40

Living Area: 2,599 ft² Under Roof: 3,333 ft²

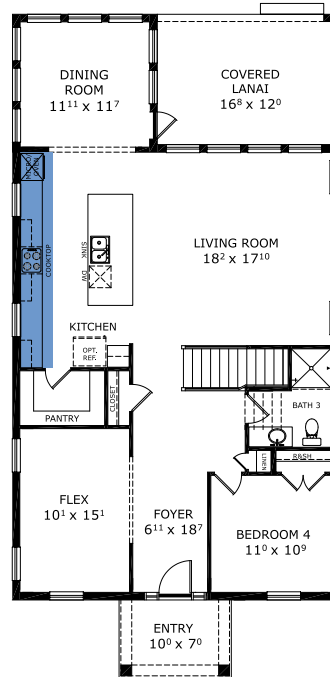
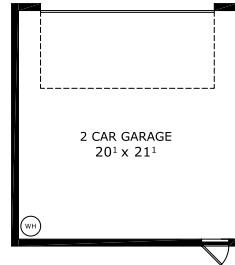
THE COASTAL



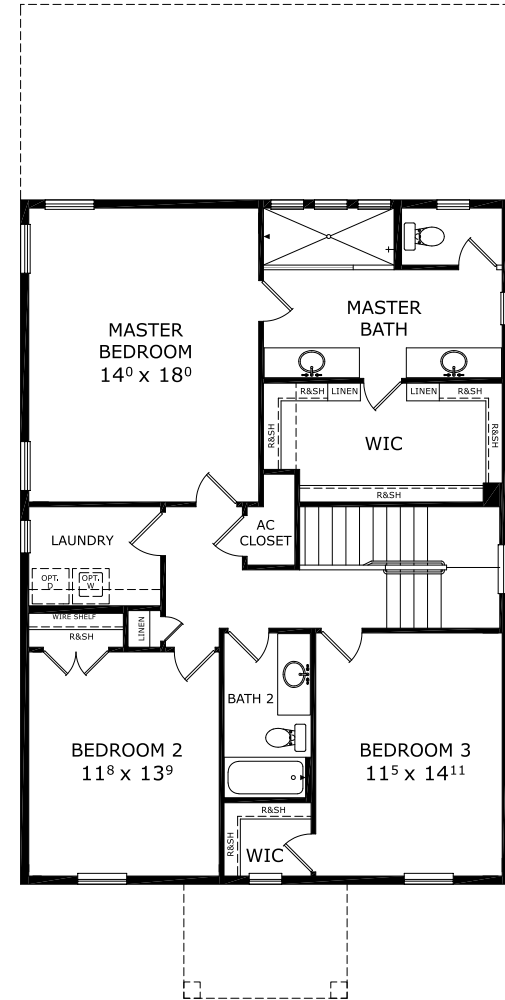
THE CRAFTSMAN



THE TRANSITIONAL



FIRST-SECOND FLOOR



©1994-2026 ICI Homes™ is a registered trademark whose divisions operate under CBC1267313, CBC1262114, CBC1262120, CBC1264300, CBC1265743, CRC1333091, and CBC1257263. Features may be plan specific and vary. Please consult a Sales Associate for specific feature information. All new ICI Homes come with a HBW 2-10 warranty. Certain elevations may have additional fees. Prices may not include lot premiums, upgrades, and options. Inventory home completion date may vary. All prices subject to change without notice. All plans are property of ICI Homes and cannot be copied or used without permission. Prices, promotions, incentives, features, options, amenities, floor plans, elevations, site maps, designs, materials, and dimensions are for illustrative purposes only and subject to change without notice. Plans should not be relied upon as representation express or implied of final sizes, locations, features or dimensions. Square footage and dimensions are estimated and may vary from description. All HERS ratings and savings are calculated by a third party energy rating service. Actual savings will depend on a number of factors, including but not limited to daily activities, home maintenance practices, household size, use of appliances, lighting and internal climate control systems, lot orientation, and surrounding climate and weather conditions. Created on 05/13/2026: _____ Garage Orientation R / L: _____

