



Carla Martin 407-739-9378



THE COSTA MESA II at SILVERLEAF

THE COSTA MESA II - CRAFTSMAN MODERN

4 Bedrooms • 3 Bathrooms • 3-Car Garage • 2,995 ft² Living Area • 3,994 ft² Under Roof

The Costa Mesa II is a spacious, thoughtfully designed 4-bedroom, 3-bath home with over 3,000 square feet of flexible living space. Imagine an open-concept layout where the kitchen, dining, and living rooms flow seamlessly, making it perfect for gatherings. The Kitchen Deluxe and hidden pantry elevate daily life, while the master suite offers a luxurious escape with two walk-in closets and an expansive bath. With features like a versatile flex room, extended lanai, and customizable options, the Costa Mesa II by ICI Homes is crafted for comfort, convenience, and adaptability to your lifestyle.

Carla Martin 407-739-9378

ICI Select Realty Inc. - 100

camartin@icihomes.com

* Renderings may vary from actual home. Please see disclaimer for more details.

THE COSTA MESA II

4 Bedrooms • 3 Bathrooms • 3-Car Garage

Silverleaf Available In
St. Augustine, FL Silverleaf 70

Living Area: 2,995 ft² **Under Roof:** 3,994 ft²

THE FARMHOUSE - CR



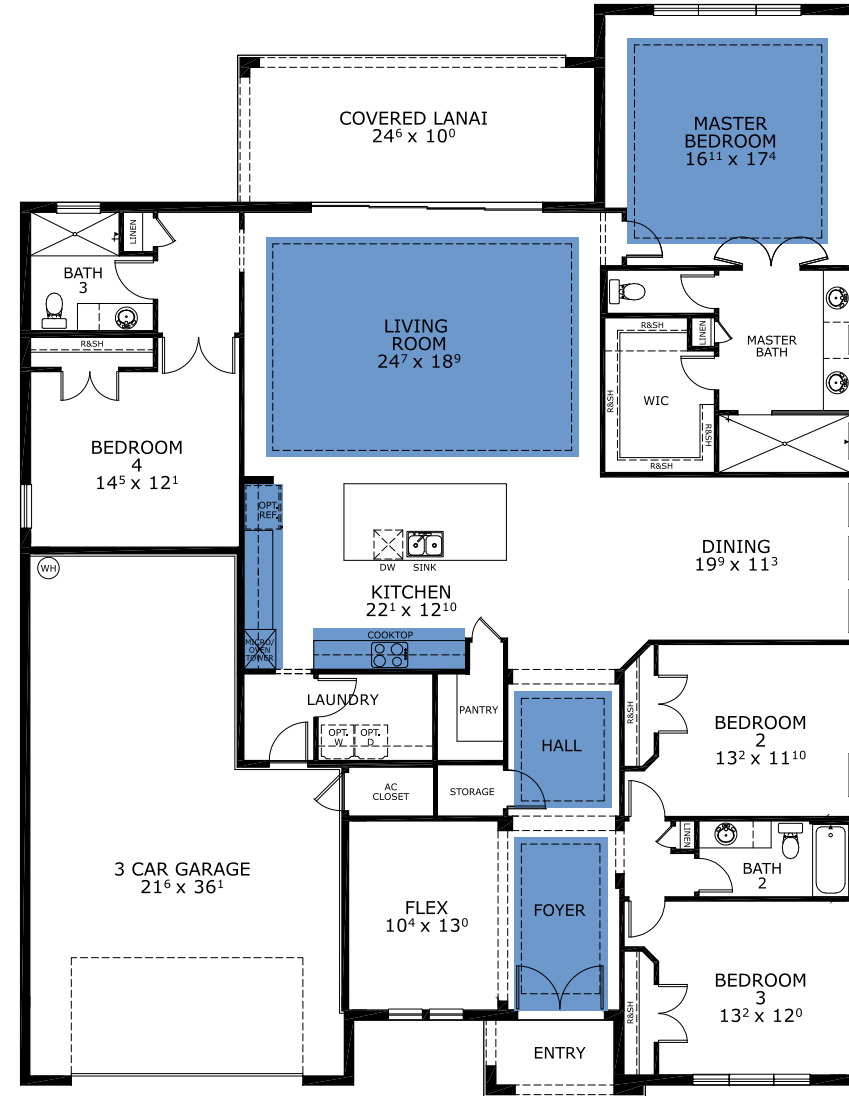
THE COASTAL MODERN - CR



THE COASTAL - CR



FIRST FLOOR



©1994-2026 ICI Homes™ is a registered trademark whose divisions operate under CBC1267313, CBC1262114, CBC1262120, CBC1264300, CBC1265743, CRC1333091, and CBC1257263. Features may be plan specific and vary. Please consult a Sales Associate for specific feature information. All new ICI Homes come with a HBW 2-10 warranty. Certain elevations may have additional fees. Prices may not include lot premiums, upgrades, and options. Inventory home completion date may vary. All prices subject to change without notice. All plans are property of ICI Homes and cannot be copied or used without permission. Prices, promotions, incentives, features, options, amenities, floor plans, elevations, site maps, designs, materials, and dimensions are for illustrative purposes only and subject to change without notice. Plans should not be relied upon as representation express or implied of final sizes, locations, features or dimensions. Square footage and dimensions are estimated and may vary from description. All HERS ratings and savings are calculated by a third party energy rating service. Actual savings will depend on a number of factors, including but not limited to daily activities, home maintenance practices, household size, use of appliances, lighting and internal climate control systems, lot orientation, and surrounding climate and weather conditions. Created on 06/28/2026: _____ Garage Orientation R / L: _____

