



Carla Martin 407-739-9378



## THE EAST PORT at SEVEN PINES

THE EAST PORT - COASTAL

MODEL

**4 Bedrooms • 4 Bathrooms • 2-Car Garage • 2,477 ft<sup>2</sup> Living Area • 3,297 ft<sup>2</sup> Under Roof**

The East Port is a 2,477-square-foot, four-bedroom, three-bath home that offers flexible, family-friendly living. The first floor's open layout connects the living room, dining area, and a gourmet kitchen with a large island and walk-in pantry. The covered lanai extends your living space outdoors, while the main-floor master suite provides a private retreat with a spacious bath. Upstairs, a large game room and two additional bedrooms create a perfect space for family and guests, with a private balcony as a charming bonus. Customizable options from ICI Homes allow you to personalize the East Port to fit your lifestyle.

**Carla Martin 407-739-9378**

ICI Select Realty Inc. - 100

[camartin@icihomes.com](mailto:camartin@icihomes.com)

\* Renderings may vary from actual home. Please see disclaimer for more details.

# THE EAST PORT

4 Bedrooms • 4 Bathrooms • 2-Car Garage

MODEL

## Seven Pines

Heritage Series | 40' Wide Lots | Rear Load - Lot 213

5256 Needles Nest Drive  
Jacksonville, FL, 32224

Living Area: 2,477 ft<sup>2</sup>

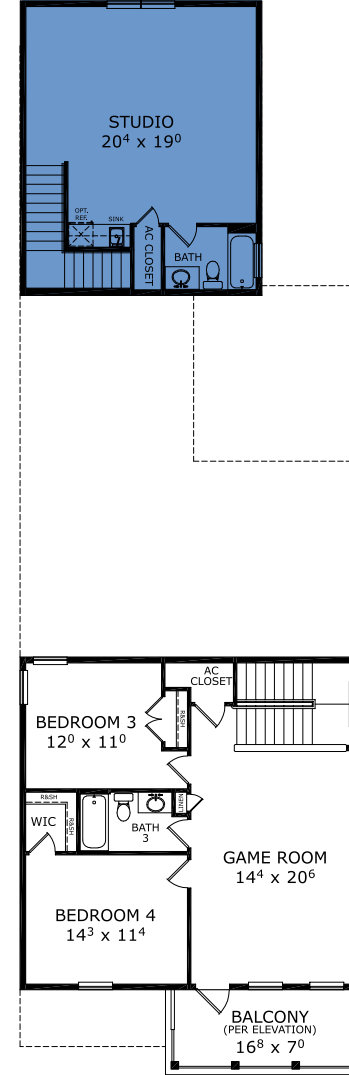
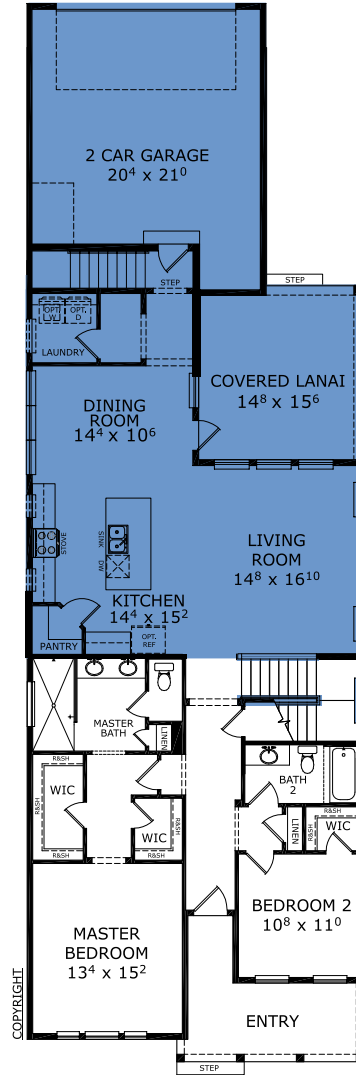
### Structural Options Included in This Home:

- ✓ Studio Above Garage
- ✓ Ceiling 12 @ Kitchen/Living/Dining
- ✓ Sliding Glass Door 12 ilo Windows
- ✓ Outlet-Floor Plug Brass
- ✓ Wood Railing @ Stairs

And much more....

From: **\$643,900**

## FIRST-SECOND FLOOR



©1994-2026 ICI Homes™ is a registered trademark whose divisions operate under CBC1267313, CBC1262114, CBC1262120, CBC1264300, CBC1265743, CRC1333091, and CBC1257263. Features may be plan specific and vary. Please consult a Sales Associate for specific feature information. All new ICI Homes come with a HBW 2-10 warranty. Certain elevations may have additional fees. Prices may not include lot premiums, upgrades, and options. Inventory home completion date may vary. All prices subject to change without notice. All plans are property of ICI Homes and cannot be copied or used without permission. Prices, promotions, incentives, features, options, amenities, floor plans, elevations, site maps, designs, materials, and dimensions are for illustrative purposes only and subject to change without notice. Plans should not be relied upon as representation express or implied of final sizes, locations, features or dimensions. Square footage and dimensions are estimated and may vary from description. All HERS ratings and savings are calculated by a third party energy rating service. Actual savings will depend on a number of factors, including but not limited to daily activities, home maintenance practices, household size, use of appliances, lighting and internal climate control systems, lot orientation, and surrounding climate and weather conditions. Created on 05/13/2026: \_\_\_\_\_ Garage Orientation R / L: \_\_\_\_\_

